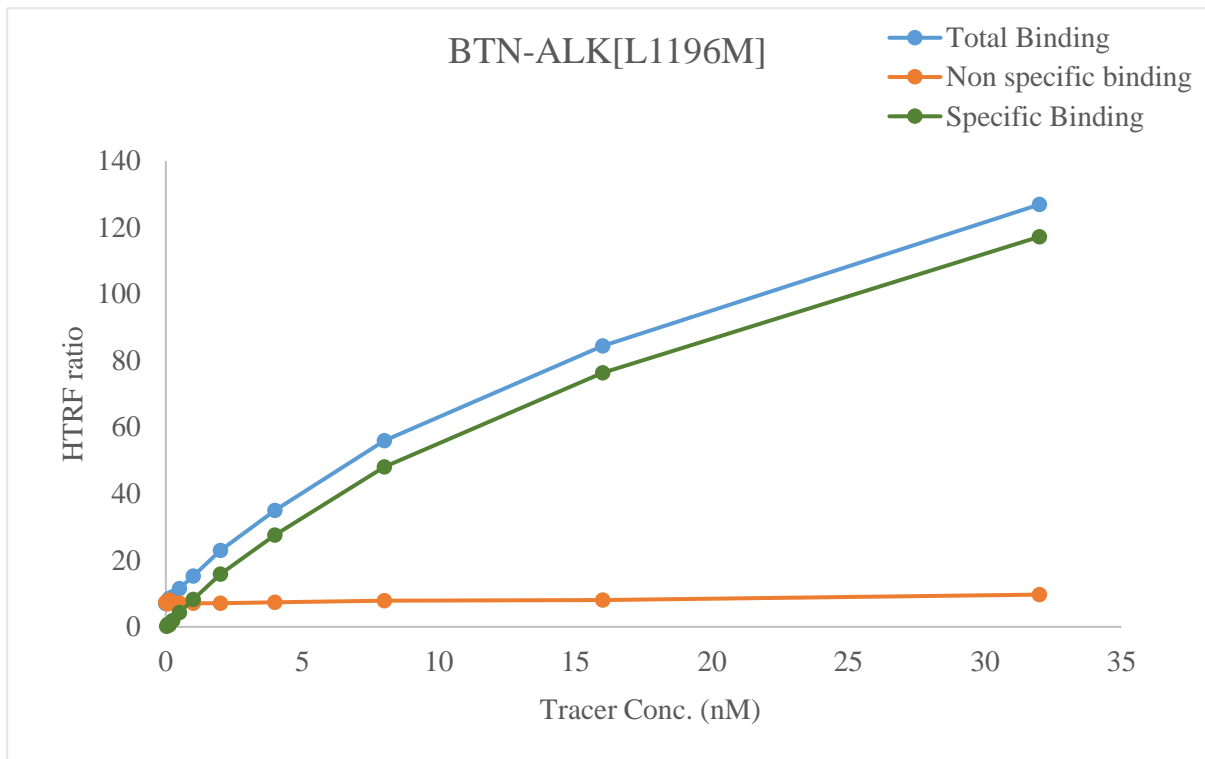


Kinase **BTN-ALK[L1196M]**

Cat.# 08-429-20N

Tracer revvity Inc.

Staurosporine-Red (#62KB01REDC)



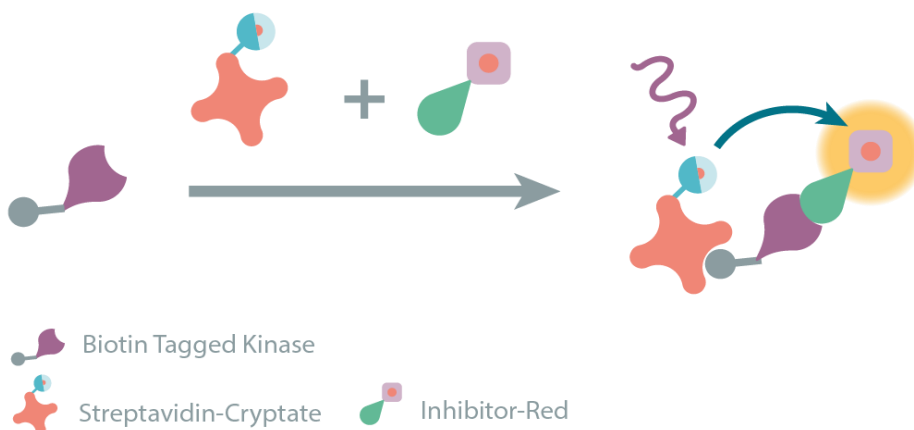
KD (nM) 30

Kinase conc. 5 nM

Eu labeled-streptavidin 5 nM

Follow the guide to set up your HTRF[®] binding assay

Determination of the dissociation constant (Kd) of the fluorescent tracer using HTRF[®] kinase binding

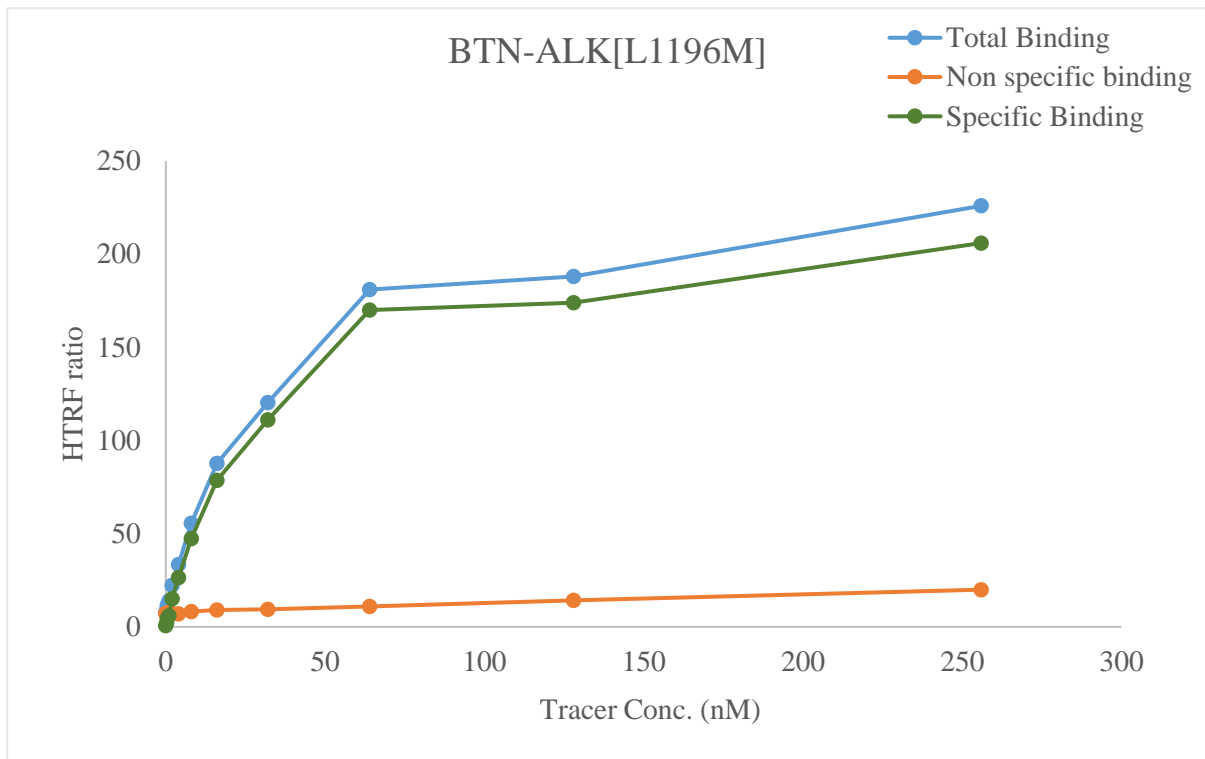


Kinase **BTN-ALK[L1196M]**

Cat.# 08-429-20N

Tracer revvity Inc.

Staurosporine-Red (#62KB01REDC)



KD (nM) 30

Kinase conc. 5 nM

Eu labeled-streptavidin 5 nM

Follow the guide to set up your HTRF[®] binding assay

Determination of the dissociation constant (Kd) of the fluorescent tracer using HTRF[®] kinase binding

