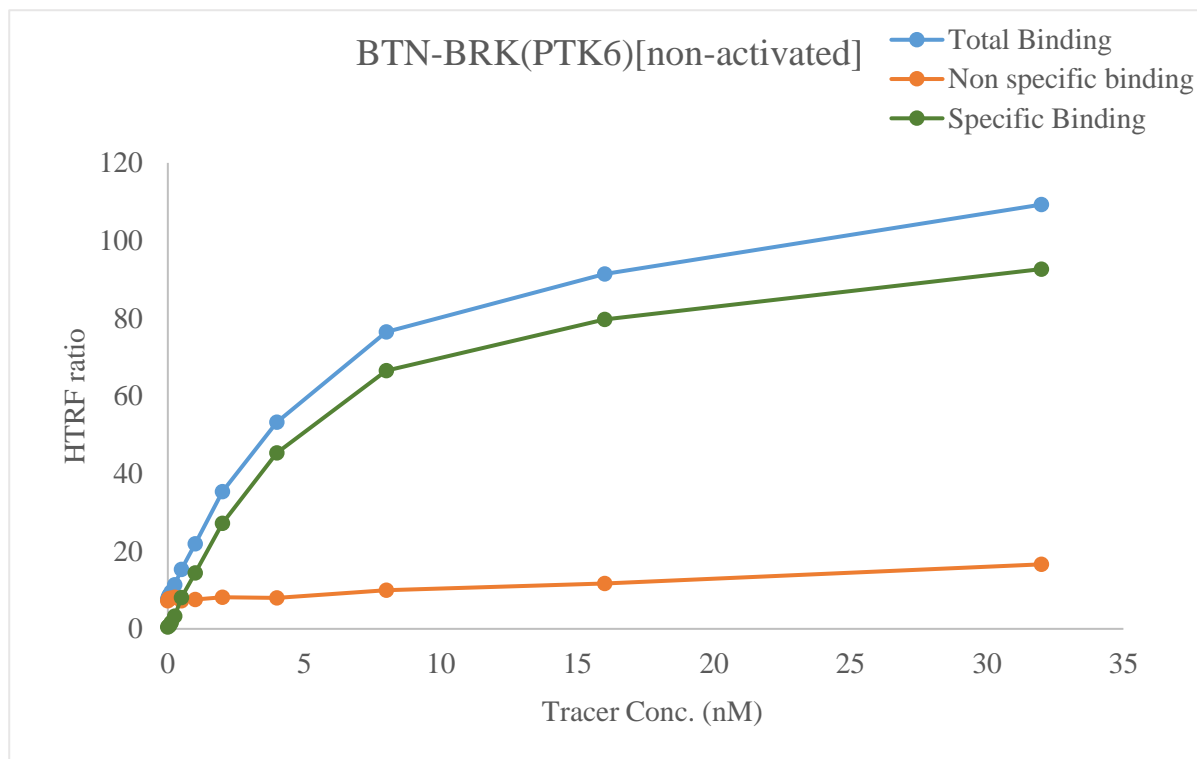


Kinase **BTN-BRK(PTK6)[non-activated]**

Cat.# 08-465-23N

Tracer revvity Inc.

Dasatinib-Red (#62KB02REDC)



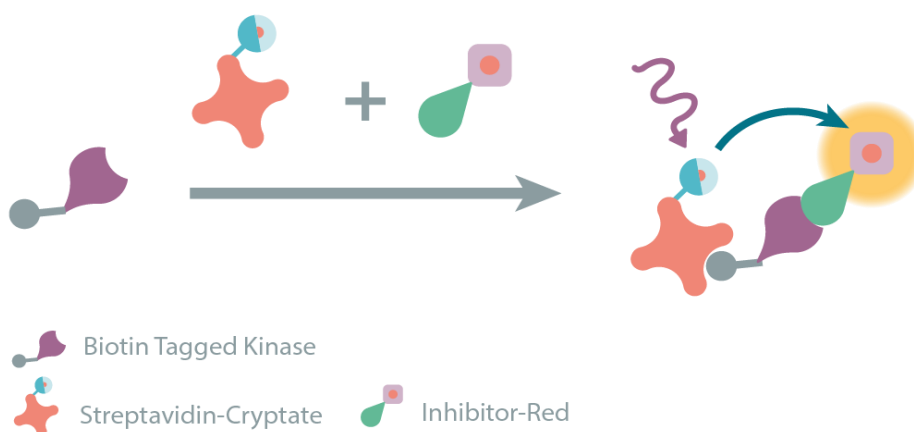
KD (nM) 5.9

Kinase conc. 5 nM

Eu labeled-streptavidin 5 nM

Follow the guide to set up your HTRF[®] binding assay

Determination of the dissociation constant (Kd) of the fluorescent tracer using HTRF[®] kinase binding

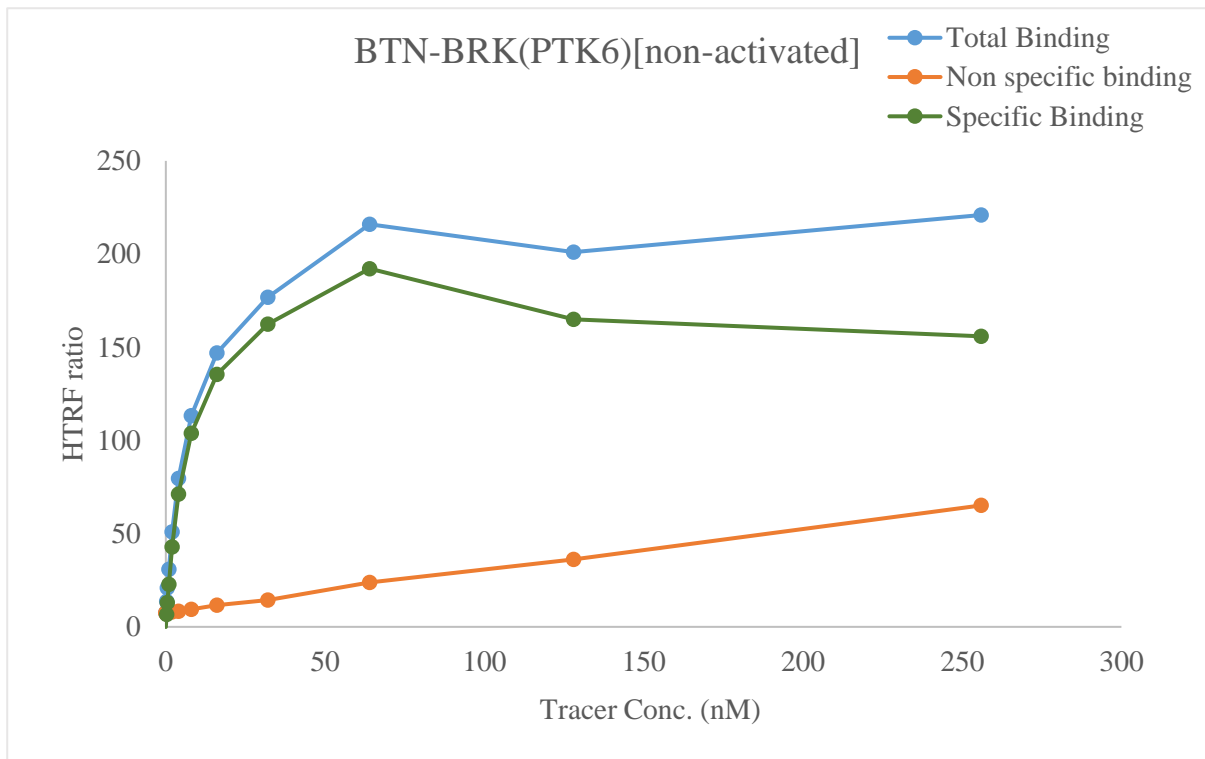


Kinase **BTN-BRK(PTK6)[non-activated]**

Cat.# 08-465-23N

Tracer revvity Inc.

Dasatinib-Red (#62KB02REDC)



KD (nM) 6.3

Kinase conc. 5 nM

Eu labeled-streptavidin 5 nM

Follow the guide to set up your HTRF[®] binding assay

Determination of the dissociation constant (Kd) of the fluorescent tracer using HTRF[®] kinase binding

