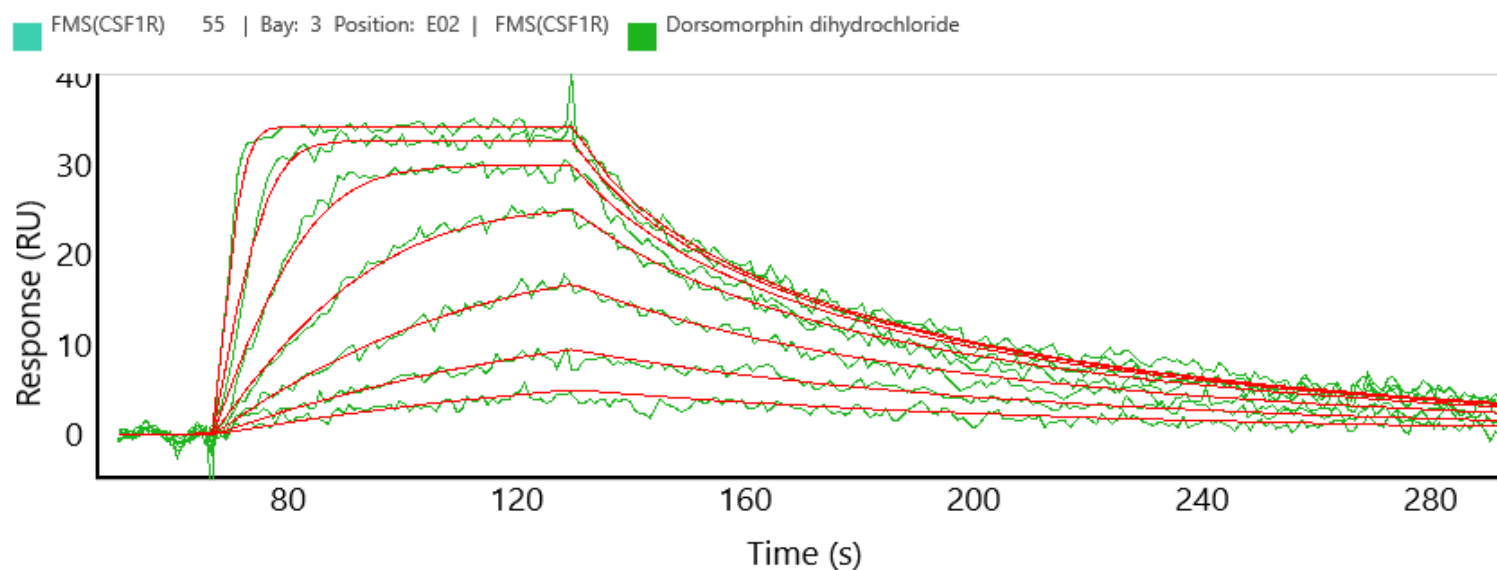


FMS(CSF1R) binding kinetics on Carterra's HT-SPR platform

Product BTN-FMS(CSF1R)
Cat# 08-455-21N
Inhibitor Dorsomorphin dihydrochloride



Carterra's High Throughput SPR Platforms

The Carterra LSA^{XT} and Ultra utilize Surface Plasmon Resonance to detect binding interactions in real-time for up to 384 samples in parallel.

You can find more information at <https://carterra-bio.com/>

