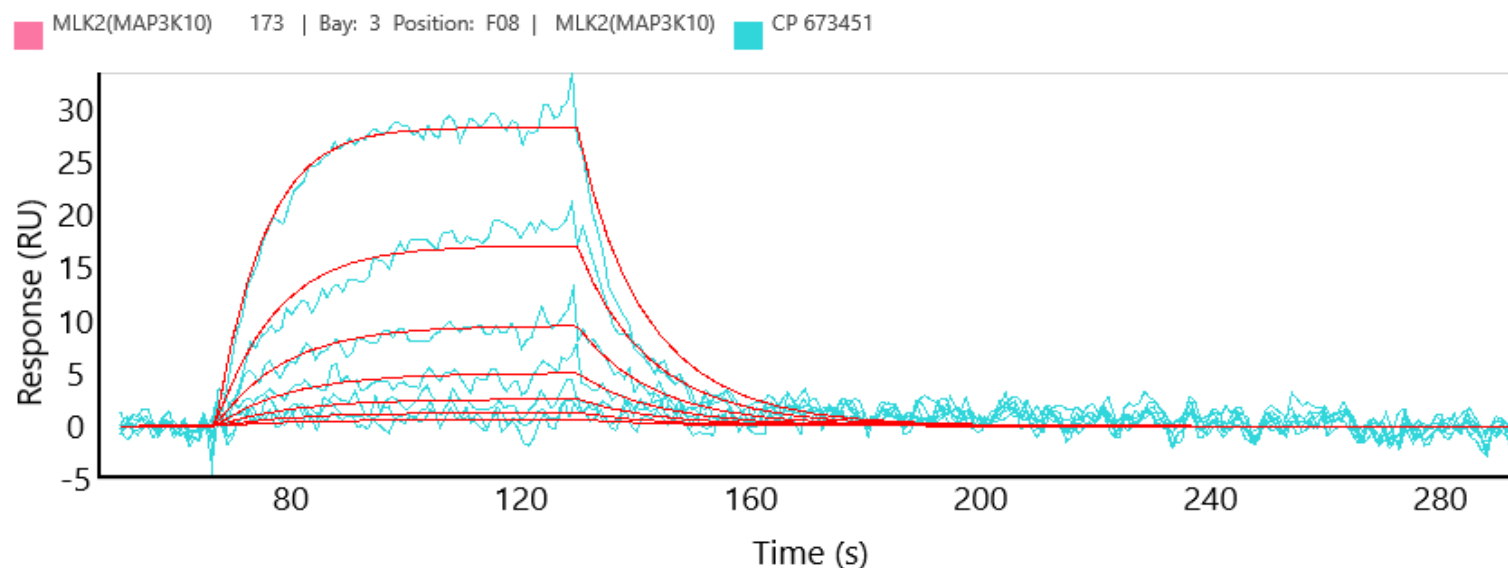


## MLK2(MAP3K10) binding kinetics on Carterra's HT-SPR platform

Product BTN-MLK2(MAP3K10)

Cat# 09-416-20N

Inhibitor CP 673451



## Carterra's High Throughput SPR Platforms

The Carterra LSA<sup>XT</sup> and Ultra utilize Surface Plasmon Resonance to detect binding interactions in real-time for up to 384 samples in parallel.

You can find more information at <https://carterra-bio.com/>

