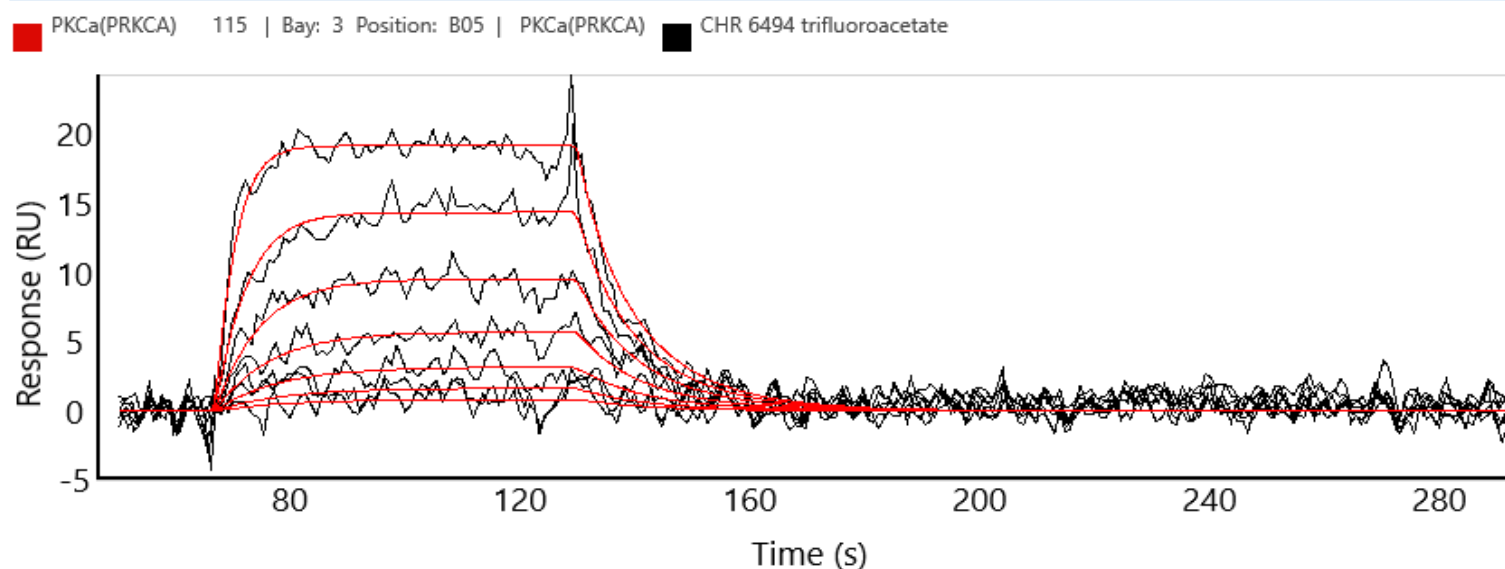


## PKC $\alpha$ (PRKCA) binding kinetics on Carterra's HT-SPR platform

Product      BTN-PKC $\alpha$ (PRKCA)  
 Cat#          01-433-20N  
 Inhibitor     CHR 6494 trifluoroacetate



## Carterra's High Throughput SPR Platforms

The Carterra LSA<sup>XT</sup> and Ultra utilize Surface Plasmon Resonance to detect binding interactions in real-time for up to 384 samples in parallel.

You can find more information at <https://carterra-bio.com/>

