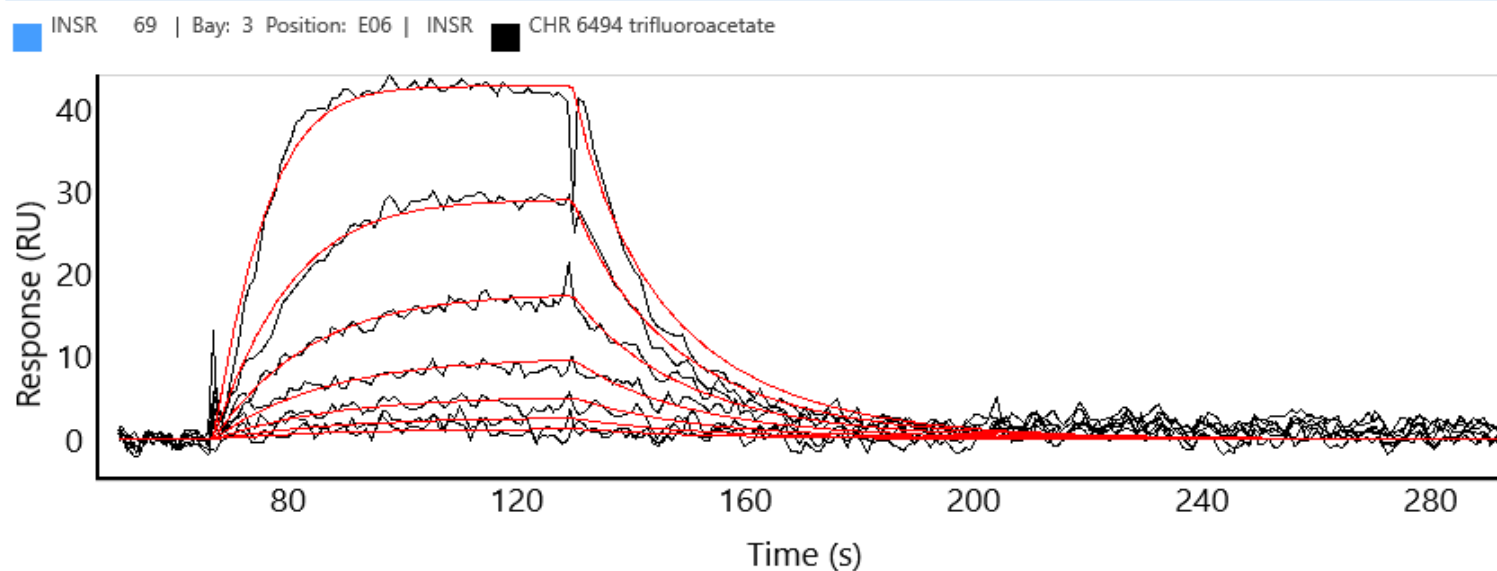


INSR binding kinetics on Carterra's HT-SPR platform

Product BTN-INSR
Cat# 08-442-20N
Inhibitor CHR 6494 trifluoroacetate



Carterra's High Throughput SPR Platforms

The Carterra LSA^{XT} and Ultra utilize Surface Plasmon Resonance to detect binding interactions in real-time for up to 384 samples in parallel.

You can find more information at <https://carterra-bio.com/>

