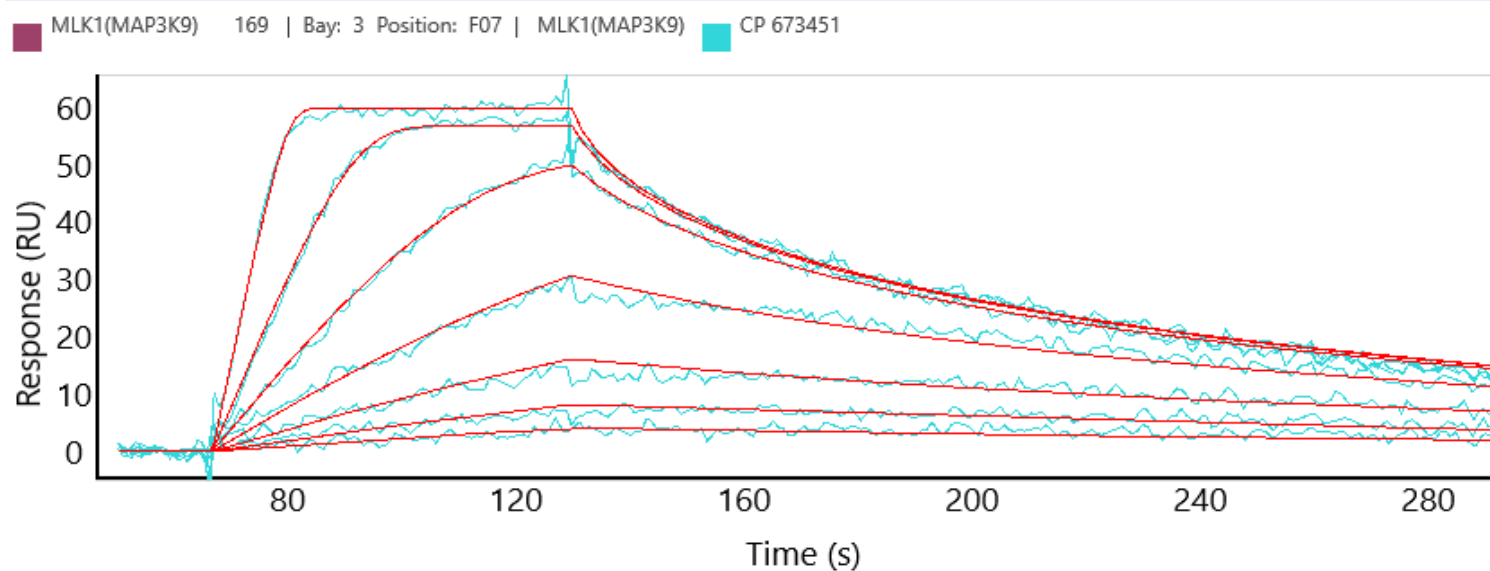


MLK1(MAP3K9) binding kinetics on Carterra's HT-SPR platform

Product BTN-MLK1(MAP3K9)

Cat# 09-415-20N

Inhibitor CP 673451



Carterra's High Throughput SPR Platforms

The Carterra LSA^{XT} and Ultra utilize Surface Plasmon Resonance to detect binding interactions in real-time for up to 384 samples in parallel.

You can find more information at <https://carterra-bio.com/>

