

Product Information

MET [Y1235D]

Product Number : **08-198**

Product description

Human MET, cytoplasmic domain [956-1390(end) amino acids and Y1235D of accession number NP_000236.2] was expressed as N-terminal GST-fusion protein (76 kDa) using baculovirus expression system. GST-MET[Y1235D] was purified by using glutathione sepharose chromatography.

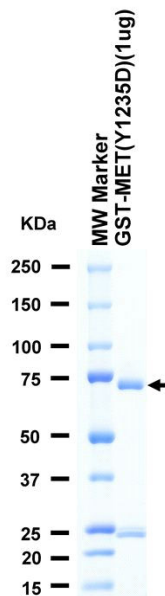
Storage buffer:

50 mM Tris-HCl, 150 mM NaCl, 0.05% Brij35,
1 mM DTT, 10% glycerol, pH7.5

Storage and Handling:

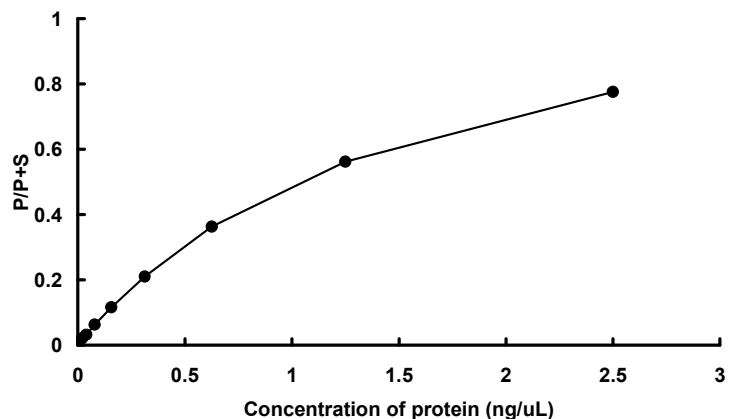
Store at -80C.
Avoid repeating freeze-thaws.

SDS-PAGE



Purity: 62 %
The purity was assessed by SDS-PAGE/CBB staining.

Activity data



The activity was measured by off-chip mobility shift assay. The enzyme was incubated with fluorescence-labeled substrate and Mg(or Mn)/ATP. The phosphorylated and unphosphorylated substrates were separated and detected by LabChip™3000.

Substrate : Srctide

ATP : 100 μ M