



ClariCELL™ TYK2 Kinase Assay Service

4-Step Assay Validation

TYK2 Expression in Cells

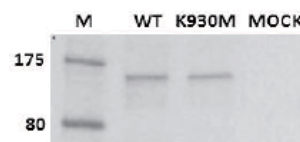


Figure 1: Wild type (WT) or kinase dead (K930M) TYK2 was expressed transiently in 293 cells. Following cell lysis, an IP Western was performed with appropriate antibodies to capture and detect total TYK2 protein.

TYK2 Autophosphorylation in Cells

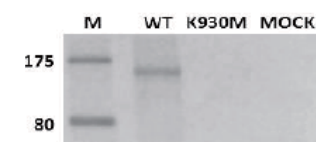


Figure 2: Wild type (WT) or kinase dead (K930M) TYK2 was expressed transiently in 293 cells. Following cell lysis, an IP Western was performed with appropriate antibodies to capture and detect phospho-TYK2 protein.

Description



The **ClariCELL™ TYK2 Kinase Assay** quantifies autophosphorylation of human full-length TYK2 in human cells. The assay is useful to determine potencies of small-molecule inhibitors against the specified kinase in the context of a cellular environment. Compound testing services are available utilizing the assay.

Overview

Human Embryonic Kidney (HEK 293) cells transiently expressing sequence verified human full-length TYK2 are exposed to test compound or control, then lysed to release cellular proteins. TYK2 is captured onto an assay plate, and the extent of autophosphorylation is quantified by ELISA using an antibody specific for the phosphorylation event. Cells expressing kinase deficient TYK2 [K930M] are also utilized as controls to calculate the % inhibition of test compounds.

Quantification of Phosphorylation

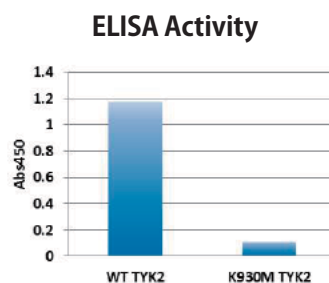


Figure 3: Wild type (WT) or kinase dead (K930M) TYK2 was expressed transiently in 293 cells. Following cell lysis, an ELISA was performed to quantify the extent of autophosphorylation of TYK2.

Reference Inhibitor Data

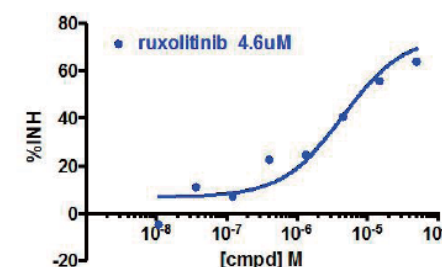


Figure 4: An autophosphorylation assay was performed in the presence of ruxolitinib, a TYK2 inhibitor. % inhibition data were plotted to determine the IC50s.

サービスの詳細、最新情報はHPをご覧ください

カルナバイオサイエンス株式会社

〒650-0047 神戸市中央区港島南町1-5-5 BMA3F

TEL: 078-302-7091 (営業部直通) / FAX: 078-302-7086

E-mail: info@carnabio.com