

Crystallography

New Tools and Crystallography Services for Structure Based Drug Discovery

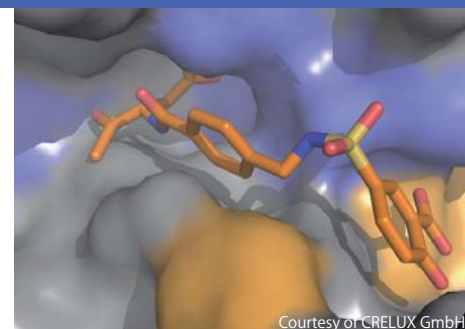


Carna now offers Co-Crystallography Services & Crystal Grade Proteins through collaboration with CRELUX GmbH. We have expanded our extensive offering of products and services to include support for Structure-based Drug Discovery. Opt for Co-crystallography Services to visualize your drug candidates with the targeted enzyme, or grow-your-own crystals using our Crystal Grade Proteins.

Targets listed on reverse side

CRELUX's Co-Crystallography Services "XPRESS"

As the process of Structure Based Drug Discovery is very important, we offer the CRELUX's crystallography service called **XPRESS** for a variety of kinases as listed on reverse side. Our collaboration project plans display a modular set up including free to choose exit points. You will profit from low fixed costs and predominantly success-based payment schedules. We are also going to offer a custom-crystallize service including DNA cloning, expression, and co-crystallization.



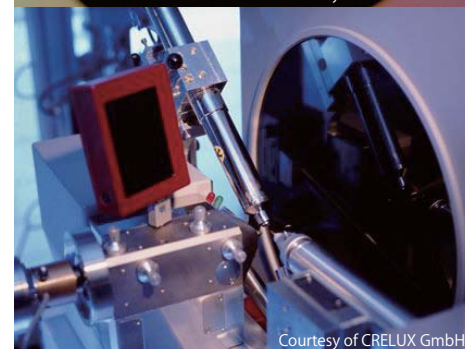
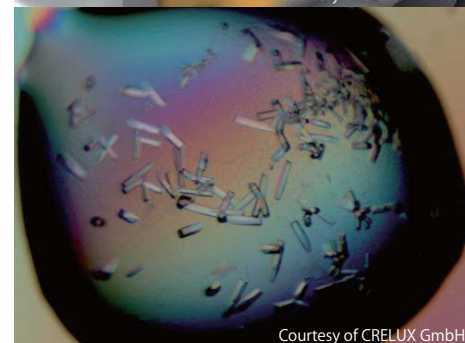
Crystal Grade Proteins (Kinase and Non-Kinase Targets)

In addition to the Co-Crystallography Service, most of Off The Shelf proteins^(*1) shown on the list can be offered as Crystal Grade Proteins^(*2) for a fast, reliable, and affordable procedure of co-crystallization performed by customer-self. Expression, purification, and crystallization for **XPRESS** targets have been established by CRELUX.

Also, crystal grade proteins developed by Carna Biosciences^(*3) solely are available. Crystallization is confirmed on all crystal grade proteins from CRELUX and Carna before dispatch. A protocol^(*4) including the condition comes with products.



Sample - CRELUX's Data Sheet



(*1) Some proteins may require compounds at the time of expression, therefore, not available for individual purchase.

(*2) Proteins may not be active, crystallization is prioritized.

(*3) Crystal grade proteins produced by Carna Biosciences has activity.

(*4) This is to check the quality of product.

For more details, please visit our website.

Carna Biosciences, Inc.

BMA 3F, 1-5-5 Minatojima-Minamimachi, Chuo-ku, Kobe 650-0047 JAPAN

TEL: 078-302-7091 / FAX: 078-302-7086

E-mail: info@carnabio.com

Co-Crystallography Service & Crystal Grade Proteins "XPRESS"

New Tools and Crystallography Services for Structure Based Drug Discovery

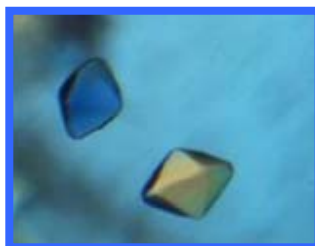
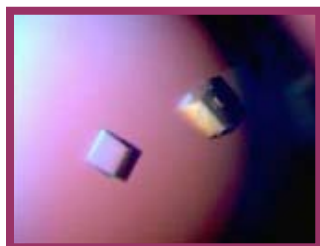
The Protein Kinases listed below are currently available for Co-Crystallography Services, and most (*1) can be offered as Crystal Grade Proteins(*2).

Available Targets - Protein Kinases		
Tyrosine Kinases	Serine/Threonine Kinases	
ABL	ACVR2A	LIMK1
ALK	ACVR2B	MAPK2
AXL1	AKT1	MAPK3
C-FMS	AKT2	MKNK2
C-KIT	ALK1	MPS1
EGFR	ALK5	NEK2
EPHB4	ASK1	p38
FAK	AurA	PAK1
FES	BRAF	PAK4
FGFR1	CDK2	PDK1
FGFR2	CHK1	PIM1
FGFR3	CK1d	PIM2
FLT3	CK1g	PKA
HCK	DAPK3	PKCi
IGF1-R	ERK2	PLK1
JAK1	ERK3/MAPK6	PLK4
JAK2	GSK3b	ROCK2
JAK3	HASPIN	RSK1
LCK	IRAK4	RSK2
LYN	JNK1	TAB1/TAK1
MER(AXL2)	JNK2	TGFBR2
MET	JNK3	
RET		
SRC		
SYK		
TYK2		

Available non-Kinase Targets		
Epigenetic Targets	Phosphatases	Others
BRD2 - BET1	PTP-1B	BAK1
BRD2 - BET2	PTPN22	BCL2A1
BRD3 - BET1	Shaperons	CYP-2D6
BRD3 - BET2		DJ-1
BRD4 - BET1	HSP70	PGK1
BRD4 - BET2	HSP70-BAG1	PHGDH
BRD9 - BET	HSP90	PI3Kgamma
BRDT - BET1	HSP90-CDC37	PKM2
CREBBP	Nuclear Hormone Receptors	PSAT1
EHMT1		
HDAC3/NCOR	ERa	
HDAC4	GR	
HDAC7	MCR	
HDAC8	PPARa	
JMJD2A	PPARd	
JMJD2C	PPARg	
JMJD2D	PR	
KDMA1	RORa	
MYST1	RORb	
PARP1	RORg	
PARP12		
PARP14		
PARP15		
PHF8	NEW 2012/7/25 updated	
PRAP3		
SIRT2		
SIRT5		
TANKYRASE1		

(*1) Some proteins may require compounds at the time of expression, therefore, not available for individual purchase.

(*2) Proteins may not be active, crystallization is prioritized.



Courtesy of CRELUX GmbH

Visit our website and check the latest available targets!